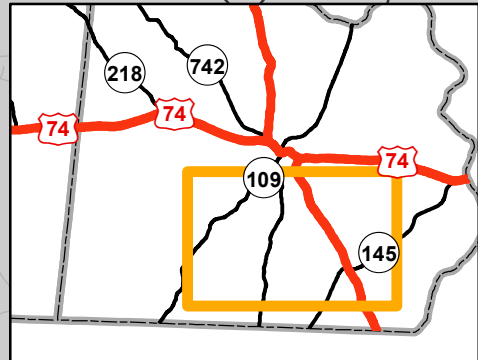
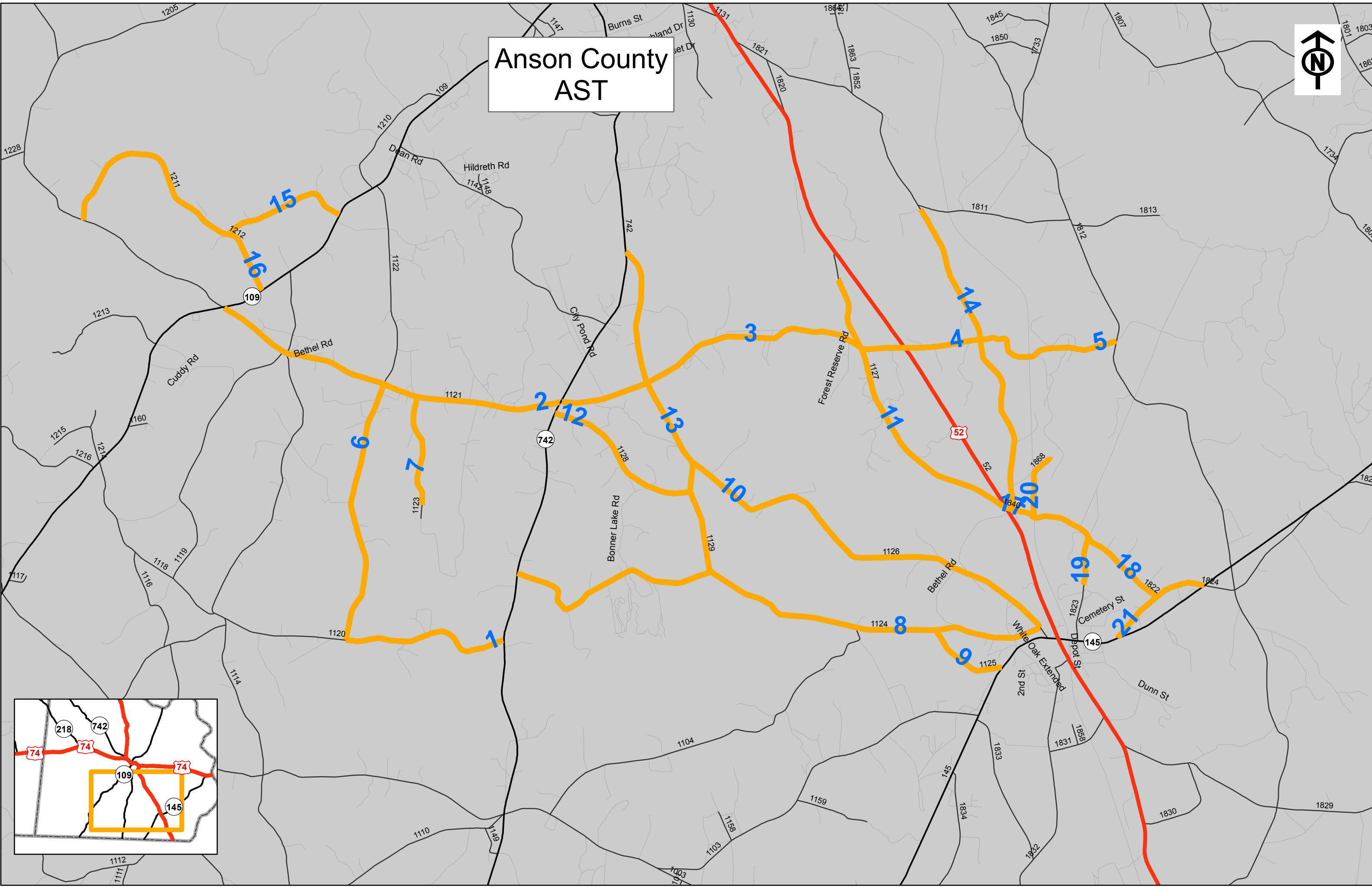


PROJECT NO.	SHEET NO.	TOTAL NO.
2016CPT.10.08.20042.1	1	4

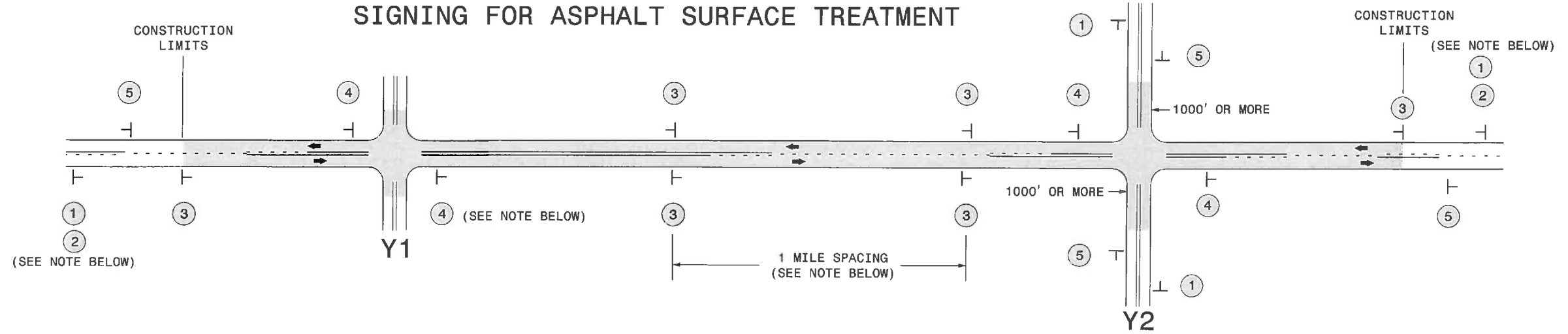
SUMMARY OF QUANTITIES

PROJECT NO	COUNTY	MAP NO	ROUTE	DESCRIPTION	LANES	FINAL SURFACE TESTING REQUIRED	WARM MIX ASPHALT REQUIRED	LENGTH MI	WIDTH FT	ASPHALT SURFACE TREATMENT, DOUBLE SEAL SY	EMULSION FOR ASPHALT SURFACE TREATMENT GAL	BLOTTING SAND TON	WORK ZONE ADVANCE/GENERAL WARNING SIGNING SF	TEMPORARY TRAFFIC CONTROL LS
2016CPT.10.08.20042.1	Anson	1	GULLEDGE RD (SR 1120)	FROM NC 742 TO PLEASANT HILL CH RD (SR 1122)	2	NO	NO	1.62	16	15,206	8,363		112	
TOTAL FOR MAP NO. 1								1.62		15,206	8,363		112	
2016CPT.10.08.20042.1	Anson	2	BETHEL RD (SR 1121)	FROM NC 109 TO NC 742	2	NO	NO	3.42	19	38,122	20,967		176	
TOTAL FOR MAP NO. 2								3.42		38,122	20,967		176	
2016CPT.10.08.20042.1	Anson	3	GATEWOOD STATION RD (SR 1121)	FROM NC 742 TO US 52 SOUTH	2	NO	NO	3.49	18	36,854	20,270		128	
TOTAL FOR MAP NO. 3								3.49		36,854	20,270		128	
2016CPT.10.08.20042.1	Anson	4	HOLLYWOOD RD (SR 1121)	FROM US 52 TO COUNTRY CLUB RD (SR 1821)	2	NO	NO	0.71	17	7,081	3,895		64	
TOTAL FOR MAP NO. 4								0.71		7,081	3,895		64	
2016CPT.10.08.20042.1	Anson	5	HOLLYWOOD RD (SR 1121)	FROM COUNTRY CLUB RD (SR 1821) TO DIGGS RD (SR 1733)	2	NO	NO	1.41	20	16,544	9,099		56	
TOTAL FOR MAP NO. 5								1.41		16,544	9,099		56	
2016CPT.10.08.20042.1	Anson	6	GREEN HILL SCHOOL RD (SR 1122)	FROM GULLEDGE RD (SR 1120) TO BETHEL RD (SR 1121)	2	NO	NO	2.53	16	23,748	13,061		176	
TOTAL FOR MAP NO. 6								2.53		23,748	13,061		176	
2016CPT.10.08.20042.1	Anson	7	CUDDY FARM RD (SR 1123)	FROM BETHEL RD (SR 1121) TO END OF MAINTENANCE	2	NO	NO	1.07	20	12,555	6,905		56	
TOTAL FOR MAP NO. 7								1.07		12,555	6,905		56	
2016CPT.10.08.20042.1	Anson	8	TEAL HALL/ROBINSON BRIDGE RD (SR 1124)	FROM NC 742 TO ROSEHAVEN RD (SR 1126)	2	NO	NO	5.47	18	57,763	31,770		310	
TOTAL FOR MAP NO. 8								5.47		57,763	31,770		310	
2016CPT.10.08.20042.1	Anson	9	BALLARD SPRINGS RD (SR 1125)	FROM ROBINSON BRIDGE RD (SR 1124) TO NC 145	2	NO	NO	0.8	20	9,387	5,163		56	
TOTAL FOR MAP NO. 9								0.8		9,387	5,163		56	
2016CPT.10.08.20042.1	Anson	10	ROSEHAVEN RD (SR 1126)	FROM ROBINSON BRIDGE RD (SR 1124) TO ROBINSON BRIDGE RD (SR 1124)	2	NO	NO	3.96	18	41,818	23,000		254	
TOTAL FOR MAP NO. 10								3.96		41,818	23,000		254	
2016CPT.10.08.20042.1	Anson	11	OLD US 52 S	FROM US 52 TO END OF MAINTENANCE	2	NO	NO	2.86	18	30,202	16,611		112	
TOTAL FOR MAP NO. 11								2.86		30,202	16,611		112	
2016CPT.10.08.20042.1	Anson	12	JARMAN RD (SR 1128)	FROM ROBINSON BRIDGE RD (SR 1124) TO NC 742	2	NO	NO	1.58	18	16,685	9,177		56	
TOTAL FOR MAP NO. 12								1.58		16,685	9,177		56	
2016CPT.10.08.20042.1	Anson	13	ROBINSON BRIDGE RD (SR 1129)	FROM TEAL HALL RD (SR 1124) TO NC 742	2	NO	NO	3.26	20	38,251	21,038		182	
TOTAL FOR MAP NO. 13								3.26		38,251	21,038		182	
2016CPT.10.08.20042.1	Anson	14	COUNTRY CLUB RD (SR 1821)	FROM GATEWOOD RD (SR 1811) TO THOMAS RD (SR 1822)	2	NO	NO	3.1	18	32,736	18,005		112	
TOTAL FOR MAP NO. 14								3.1		32,736	18,005		112	
2016CPT.10.08.20042.1	Anson	15	HORTON RD (SR 1211)	FROM CAMDEN CHURCH RD (SR 1121) TO NC 109	2	NO	NO	3.37	20	39,541	21,748		56	
TOTAL FOR MAP NO. 15								3.37		39,541	21,748		56	
2016CPT.10.08.20042.1	Anson	16	TREXLER STORE RD (SR 1212)	FROM HORTON RD (SR 1211) TO NC 109	2	NO	NO	0.64	20	7,509	4,130		112	
TOTAL FOR MAP NO. 16								0.64		7,509	4,130		112	
2016CPT.10.08.20042.1	Anson	17	THOMAS RD (SR 1840)	FROM US 52 TO COUNTRY CLUB RD (SR 1821)	2	NO	NO	0.1	20	1,173	645			
TOTAL FOR MAP NO. 17								0.1		1,173	645			
2016CPT.10.08.20042.1	Anson	18	THOMAS RD (SR 1822)	FROM COUNTRY CLUB RD (SR 1821) TO SPORTSMAN RD (SR 1824)	2	NO	NO	1.65	20	19,360	10,648		56	
TOTAL FOR MAP NO. 18								1.65		19,360	10,648		56	
2016CPT.10.08.20042.1	Anson	19	N. COX RD (SR 1823)	FROM THOMAS RD (SR 1822) TO THE PAVEMENT JOINT AT MORVIN C/L	2	NO	NO	0.46	19	5,127	2,820		56	
TOTAL FOR MAP NO. 19								0.46		5,127	2,820		56	
2016CPT.10.08.20042.1	Anson	20	PONDEROSA RD (SR 1868)	FROM THOMAS RD (SR 1822) TO END OF MAINTENANCE	2	NO	NO	0.64	20	7,509	4,130		56	
TOTAL FOR MAP NO. 20								0.64		7,509	4,130		56	
2016CPT.10.08.20042.1	Anson	21	SPORTSMAN RD (SR 1824)	FROM NC 145 TO NC 145	2	NO	NO	1.03	18	10,877	5,982		112	
TOTAL FOR MAP NO. 21								1.03		10,877	5,982		112	
TOTAL FOR PROJ NO. 2016CPT.10.08.20042.1								43.17		468,048	257,427	20.00	2,298	1
GRAND TOTAL								43.17		468,048	257,427	20.00	2,298	1

Anson County AST



SIGNING FOR ASPHALT SURFACE TREATMENT



LEGEND	
—	STATIONARY SIGN
←	DIRECTION OF TRAFFIC FLOW

MAINLINE (-L-) SIGNING

-Y- LINE SIGNING

SIGNING NOTES AND PLACEMENT PER DIRECTION	①		PLACE 1000' PRIOR TO BEGINNING OF CONSTRUCTION LIMITS. ONLY USED ON -Y- LINES IF RESURFACING LIMITS EXTEND 1000' ALONG -Y- LINE.
	②		#2 SIGN ONLY USED WHEN RESURFACING LIMITS ARE 2 OR MORE MILES IN LENGTH. ROUND UP TO NEXT WHOLE NUMBER. (NO FRACTIONAL OR DECIMAL NUMBERS)
	③	 	ALTERNATE THE FOLLOWING TWO SIGNS: STARTING WITH "LOOSE GRAVEL" (W8-7) FOLLOWED BY "UNMARKED PAVEMENT". PLACE INITIALLY AT THE CONSTRUCTION LIMITS AND SPACED 1 MILE APART THEREAFTER. IF NO -Y- LINES EXIST, PLACE 2ND SET 1/2 MILE FROM THE CONSTRUCTION LIMITS AND THEN SPACE 1 MILE THEREAFTER.
	④		THESE ARE FOR -Y- LINES THAT ARE "THROUGH" ROADWAYS. DEAD END AND SUBDIVISION ROADS ARE NOT "THROUGH" ROADWAYS. INSTALL 500' +/- FROM EACH -Y- LINE APPROACH AS SHOWN ABOVE. FOR MULTIPLE -Y- LINES THAT ARE SEPARATED BY 0.25 MILES OR LESS, TREAT AS A SINGLE UNIT AND INSTALL WITHIN 500' OF EACH APPROACH. A MAXIMUM OF 2 SIGN SETS PER MILE. DO NOT INSTALL WHEN -Y- LINES ARE WITHIN 0.5 MILES FROM "END ROAD WORK" SIGN.
	⑤		PLACE 500' FOLLOWING THE END OF CONSTRUCTION LIMITS.

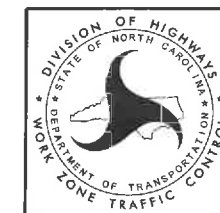
NO REQUIRED STATIONARY SIGNING FOR THE FOLLOWING -Y- LINE CONDITIONS:

- 1) LESS THAN 1000' OF RESURFACING ALONG -Y- LINE
- 2) SUBDIVISION ROADS
- 3) DEAD END ROADS

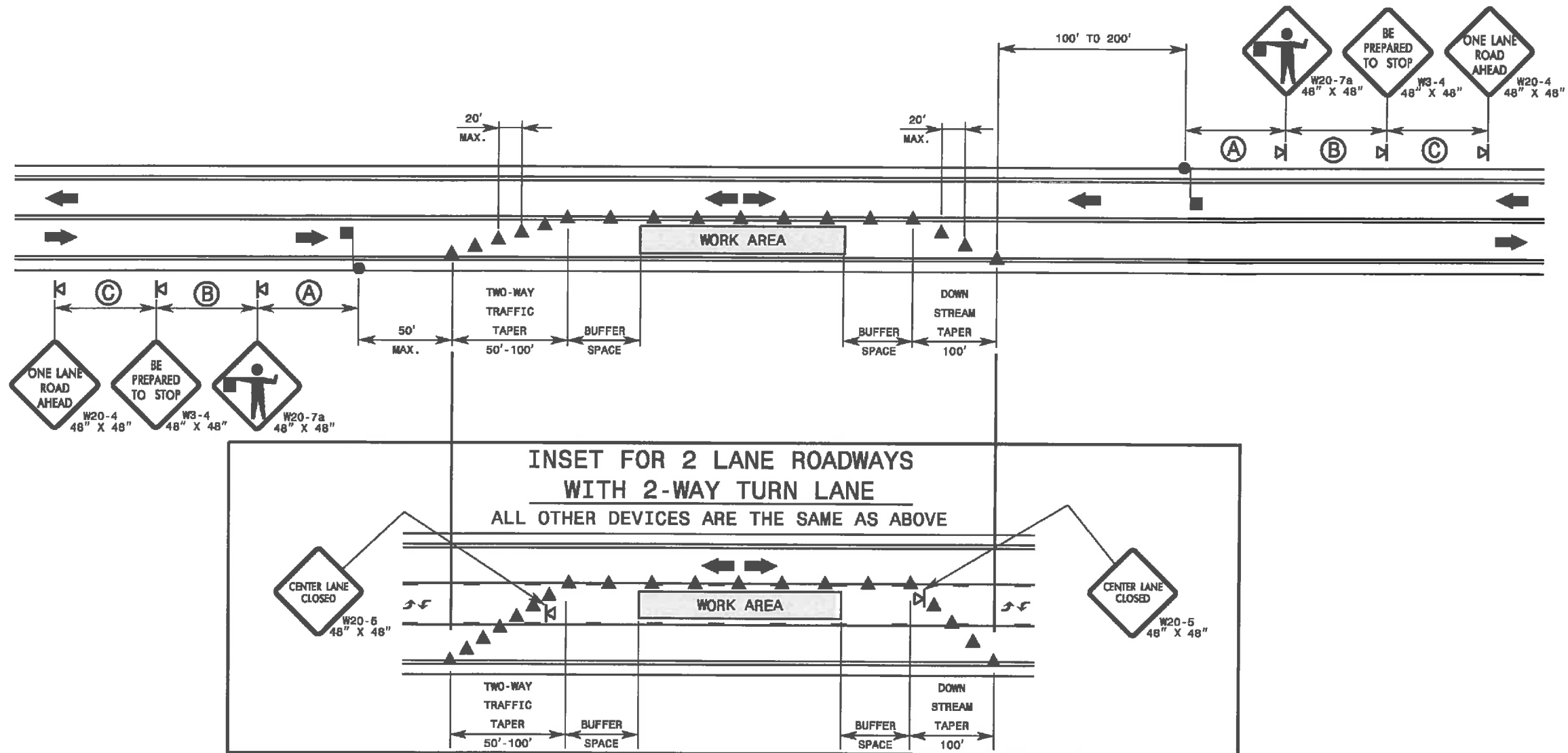
WHEN PAVING/CONSTRUCTION ACTIVITIES PROCEED ACROSS AN UNSIGNED -Y- LINE, ADVANCE WARNING PORTABLE SIGNS SHALL BE USED ALONG THE -Y- LINE AS SHOWN BELOW. REMOVE UPON COMPLETION OF WORK.



PLACED 500' IN ADVANCE OF FLAGGER. PLACED 250' IN ADVANCE OF FLAGGER.



ADVANCE WARNING SIGNS FOR ASPHALT SURFACE TREATMENTS 2 LANE ROADWAYS



GENERAL NOTES FOR FLAGGER OPERATIONS

- 1- REFER TO STD. 1101.11 SHEET 4 FOR SIGN SPACING.
- 2- INSTALL LANE CLOSURES WITH THE TRAFFIC FLOW, BEGINNING WITH DEVICES ON THE UPSTREAM SIDE OF TRAFFIC.
- 3- REMOVE LANE CLOSURES AGAINST THE TRAFFIC FLOW, BEGINNING WITH DEVICES ON THE DOWNSTREAM SIDE OF TRAFFIC.
- 4- PLACE CONES THRU THE WORK AREA AT THE MAXIMUM SPACING EQUAL IN FEET TO 2 TIMES THE POSTED SPEED LIMIT.
- 5- EXTEND LANE CLOSURES AT THE BUFFER SPACE SUCH THAT STOPPING SIGHT DISTANCE IS PROVIDED TO THE FLAGGER (REFER TO STD. 1101.11 SHEET 2).
- 6- DO NOT STOP TRAFFIC IN ANY ONE DIRECTION FOR MORE THAN 5 MINUTES AT A TIME.
- 7- DRUMS OR SKINNY-DRUMS MAY BE USED IN LIEU OF CONES. REFER TO ROADWAY STANDARD DRAWING 1180.01 FOR SKINNY-DRUM REQUIREMENTS.
- 8- USE FLAGGERS TO CONTROL TRAFFIC AT INTERSECTIONS AFFECTED BY THE LANE CLOSURE. SUPPLEMENT FLAGGERS LOCATED AT INTERSECTIONS WITH FLAGGER AHEAD SIGNS (W20-7a) PLACED APPROXIMATELY 250 FT. IN ADVANCE OF THE FLAGGER. FOR SIGNALIZED INTERSECTIONS PLACE SIGNALS IN THE FLASH MODE AND RECOMMEND THE USE OF LAW ENFORCEMENT.
- 9- REFER TO 2009 MUTCD, CHAPTER 6, FOR FLAGGER CONTROL, REQUIREMENTS, AND PROCEDURES.
- 10- DO NOT EXCEED A 1 MILE LANE CLOSURE LENGTH UNLESS OTHERWISE SHOWN IN THE TMP OR AS DIRECTED BY THE ENGINEER.

GENERAL NOTES FOR PILOT CAR OPERATIONS

- 1- USE PILOT CARS WHEN DIRECTED BY THE ENGINEER.
- 2- IF ROADWAY WIDTH IS LESS THAN 22 FEET (EOP TO EOP), CONES MAY NOT BE REQUIRED ALONG WORK AREA, AND AT THE DISCRETION OF THE ENGINEER, CONES MAY BE OMITTED ALONG THE WORK AREA IF USING A PILOT CAR.
- 3- CONES ARE ALWAYS REQUIRED IN THE UPSTREAM AND DOWNSTREAM TAPERS.
- 4- MOUNT SIGN G20-4 "PILOT CAR FOLLOW ME" AT A CONSPICUOUS POSITION ON THE REAR OF THE PILOT VEHICLE.
- 5- DO NOT INSTALL MORE THAN ONE (1) MILE OF LANE CLOSURE, MEASURED FROM THE BEGINNING OF THE MERGE TAPER TO THE END OF THE LANE CLOSURE.
- 6- ADVISE RESIDENTS AND BUSINESSES WITHIN THE LANE CLOSURE LIMITS ABOUT METHODS OF SAFE EGRESS AND INGRESS FROM DRIVEWAYS DURING FLAGGING AND PILOT CAR OPERATIONS.

LEGEND

- FLAGGER
- CONE
- PORTABLE SIGN
- DIRECTION OF TRAFFIC FLOW